



A Cboe Global Markets Company

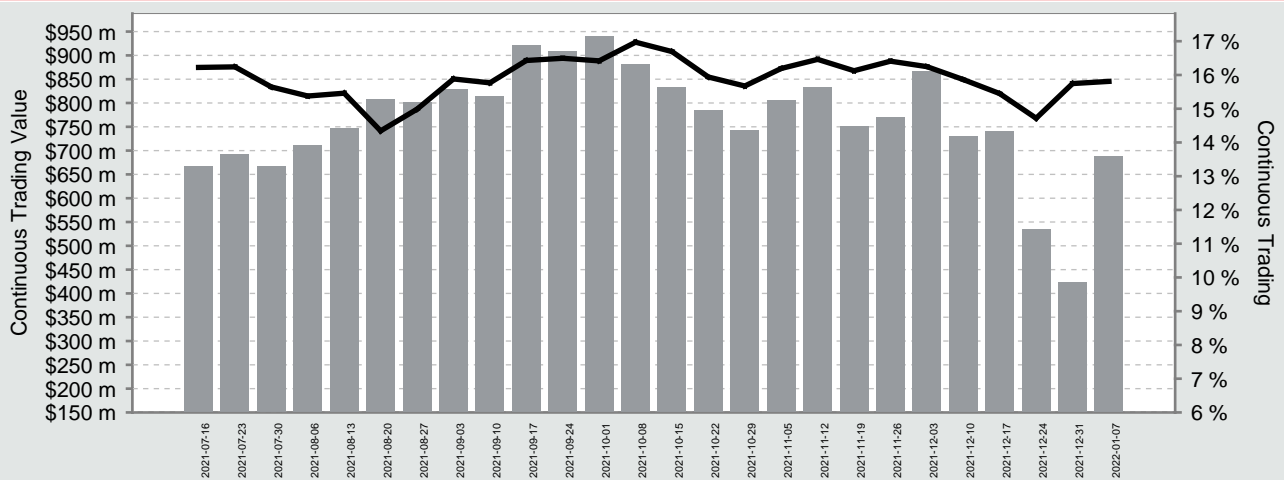
**AVERAGE DAILY VALUES for week 7/01/2022**

| Mid-Point Trades   |         |
|--------------------|---------|
| % of Trades at Mid | 15.74 % |
| % of Value at Mid  | 9.78 %  |

|                          |                |
|--------------------------|----------------|
| Continuous Trading       | 15.81 %        |
| Continuous Trading Value | \$ 688,661,604 |
| Total Market             | 17.35 %        |
| Trade Reporting Value    | \$ 518,943,454 |
| Symbols Traded           | 1,586          |
| Symbols Quoted           | 2,140          |

| Price Improvement Trades |         |
|--------------------------|---------|
| % of Trades with PI      | 17.72 % |
| Average PI (BPs)         | 53.33   |

**Continuous Trading Value And Market Share**



**Top Symbols By Continuous Trading (CT) %**

| Symbol | CT      | CT Value     | % PI    | Avg PI |
|--------|---------|--------------|---------|--------|
| VGS    | 39.37 % | \$ 3,891,131 | 26.56 % | 1.49   |
| IMU    | 37.39 % | \$ 5,011,088 | 22.62 % | 82.45  |
| VTS    | 36.77 % | \$ 3,388,062 | 26.26 % | .87    |
| CXO    | 36.59 % | \$ 5,800,328 | 16.77 % | 51.06  |
| MNS    | 32.60 % | \$ 2,875,982 | 14.72 % | 66.56  |

**Top Symbols By Continuous Trading Value**

| Symbol | CT Value      | CT      | % PI    | Avg PI |
|--------|---------------|---------|---------|--------|
| TLS    | \$ 14,184,584 | 23.23 % | 24.17 % | 15.93  |
| BRN    | \$ 14,051,618 | 27.68 % | 13.51 % | 46.05  |
| S32    | \$ 12,042,820 | 25.52 % | 26.09 % | 15.53  |
| SYD    | \$ 10,722,160 | 31.78 % | 33.16 % | 7.35   |
| STO    | \$ 9,991,768  | 21.94 % | 20.87 % | 10.58  |

**Top Symbols At The Mid-Point**

| Symbol | Mid-Point Value | Trades at Mid | Value at Mid | Symbol | Mid-Point Value | Trades at Mid | Value at Mid |
|--------|-----------------|---------------|--------------|--------|-----------------|---------------|--------------|
| SYD    | \$ 4,751,443    | 30.71 %       | 44.55 %      | CSL    | \$ 2,774,437    | 9.55 %        | 42.51 %      |
| S32    | \$ 3,251,364    | 23.73 %       | 25.40 %      | BHP    | \$ 2,742,433    | 3.64 %        | 16.97 %      |
| TLS    | \$ 3,111,396    | 20.24 %       | 20.62 %      | NCM    | \$ 2,699,899    | 12.24 %       | 51.04 %      |
| APT    | \$ 3,098,439    | 12.64 %       | 48.37 %      | STO    | \$ 2,458,582    | 15.62 %       | 24.12 %      |
| GMG    | \$ 2,912,290    | 12.69 %       | 35.41 %      | OZL    | \$ 1,928,662    | 8.03 %        | 37.11 %      |

All information is for the cash equities stock universe that is published in Chi-X's daily security file (CHIXTSL), which includes stocks, listed managed funds and ETFs but excludes warrants, interest rate securities and derivatives.

|                          |  |                          |   |
|--------------------------|--|--------------------------|---|
| Continuous Trading       | The value of trades executed on Chi-X during continuous trading, expressed as an average of the daily percentages of total values executed during continuous trading on Chi-X and ASX TradeMatch, excluding auctions, over the course of the reporting week. | Average PI (BPs)         | The average price improvement, expressed in basis points, available on trades that executed with price improvement relative to the best available ASX bid or offer over the course of the reporting week. |
| Continuous Trading Value | The average daily value of trades executed on Chi-X during continuous trading over the course of the reporting week.   | Mid-Point Value          | The average daily value of all trades executed on Chi-X at the mid-point of the National Best Bid and Offer.  |
| Total Market             | The value of all trades executed on or reported to Chi-X, expressed as an average of the daily percentages of total values of all trades executed on or reported to all venues, including Chi-X, over the course of the reporting week.                      | Trades at Mid            | The average daily percent of trades executed on Chi-X during continuous trading at the mid-point of the National Best Bid and Offer.  |
| Trade Reporting Value    | The average daily value of all transactions that are reported to Chi-X in accordance with the Market Integrity Rules (Competition in Exchange Markets) over the course of the reporting week.  | Value at Mid             | The average daily percentage of value executed on Chi-X during continuous trading at the mid-point of the National Best Bid and Offer.  |
| % PI                     | The average daily percent of trades executed on Chi-X during continuous trading that executed with price improvement relative to the best available ASX bid or offer over the course of the reporting week.  | Price Improvement Trades | Daily average calculation of aggressive trades executed on Chi-X during continuous trading over the course of the reporting week.   |

Copyright 2021, Chi-X Australia Pty Ltd (Chi-X) ABN 47 129 584 667. All rights reserved. CHI-X is a registered trademark. Chi-X holds an Australian Market Licence and operates a financial market in Australia. While Chi-X has taken care preparing this document, to the extent permitted by law Chi-X makes no representations or warranties and excludes all liability (including for negligence) in connection with the same. This document is provided for informational purposes only. Under no circumstances is it to be used as a basis for, or considered as an offer to engage in any activity or purchase or sell any security, or as a solicitation or recommendation for the purchase, sale, or offer to purchase or sell any security.